



CORPORATE FLEET
SERVICES

2001 Boeing BBJ - S/N 30791

2001 Boeing BBJ

S/N 30791, Registration N4125



AIRFRAME

Total Time 9,041 Hours 2,679 Landings

ENGINES

Model: CFM56-7B27/B3

s/n 876509: 9,041 Hours 2,679 Cycles

s/n 876510: 9,041 Hours 2,679 Cycles

APU

Model: Honeywell 131-9B

s/n P-5708: 10,337 Hours 66,621 Cycles

MAINTENANCE

C-Check Insp. Currently Underway at King Aerospace Commercial Corp. (OK)

Expected Readiness Date, Late September 2022

ADS-B Out (V2, Installed Sept 2020) and FANS-1+ and CPDL Compliant

Capable for ETOPS 180 Minutes

Aux Fuel System w/6-Cells (1 Fwd, 5 Aft) = 2,825 US Gal (18,928 lbs or 8,585 kg)

2001 Boeing BBJ

S/N 30791, Registration N4125

AVIONICS

- Dual Honeywell Autopilot
- Smiths Industries Autopilot
- Dual Collins HF Transceivers
- Triple Collins VHF Transceivers
- Dual VHF Nav w/SELCAL
- Avtech Corp Remote Electronic Unit
- Artex ELT
- L3 Communications CVR & FDR
- Honeywell SATCOM SDU
- Collins Weather Radar
- Dual Smiths Industries FMS
- Collins TTR-920 TCAS II
- Dual Collins ADF Receivers
- Dual Collins DME
- Dual Rockwell VOR/Marker Beacons
- Dual Collins ATC Transponders
- Allied Signal Mark VII EGPWS
- Flight Dynamics Heads-Up Display

ADDITIONAL EQUIPMENT

- Inmarsat SATCOM System w/Swift Broadband and 3G/4G on Ground via SATCOM Direct Router
- Internet by Ethernet Ports or WiFi
- Rockwell Collins RC Venue In-Flight Entertainment:
 - Blue Ray DVD Players
 - Boxee AVOD System
 - Skybox
 - Airshow
- Multipurpose Displays for Cabin/Entertainment Management (incl. lights & sound)
- Two 42" High Def Monitors in Lounge & Dining Areas
- Two 24" High Def Monitors in Office & Bedroom
- 10.6" Touchscreen Monitor in Galley
- PED Universal Power Outlets: (3x) Crew Rest, (4x) Dining Area, (4x) office, (4x) Bedroom, (2x) Lounge Sideledge
- Seven Phones Aboard (combined cockpit through cabin)

2001 Boeing BBJ

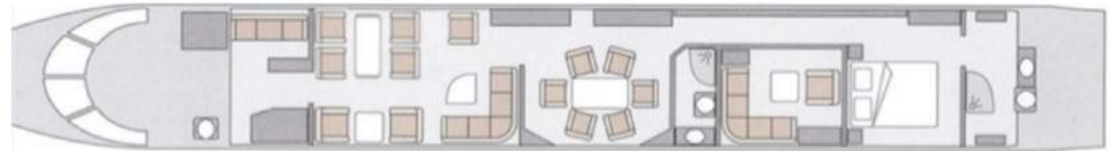
S/N 30791, Registration N4125



INTERIOR

Nineteen (19) passenger interior. Last refurbishment 2014.

- Forward Cabin:** Forward galley, followed by forward right 4-place club setting with high-low table, and single seat behind it, forward left 2-place club setting with 5-place divan and coffee table behind.
- Mid Cabin:** 6-place conference or dining area, followed by private office area with 4-place divan opposite single seat.
- Aft Cabin:** Bedroom with queen sized bed and private master bath.
- Galley:** Forward, with 2 convection ovens, single microwave, refrigerator and coffee maker.
- Crew Area:** 2 Cockpit Seats, captain and first officer seat plus one jumpseat. One crew seat located next to forward entry door with 3-place divan (2 seats approved TTOL) in crew rest area, just behind galley.
- Lavatories:** Crew lav located in fwd cabin, with guest lav mid cabin and master lav located aft cabin. Guest and master lavatories include showers with a total 680 liters (180 Gal) water capacity.



2001 Boeing BBJ

S/N 30791, Registration N4125



EXTERIOR

Overall Matterhorn White with Combat Brown tail, engine cowlings and stripe.

New, June of 2014.

WEIGHTS

Maximum Taxi Weight	77,791 kg (171,600 lbs)
Maximum Takeoff Weight	77,654 kg (171,000 lbs)
Maximum Landing Weight	60,781 kg (134,000 lbs)
Maximum Zero Fuel Weight	50,080 kg (110,409 lbs)

2001 Boeing BBJ

S/N 30791, Registration N4125



2001 Boeing BBJ

S/N 30791, Registration N4125



2001 Boeing BBJ

S/N 30791, Registration N4125



2001 Boeing BBJ

S/N 30791, Registration N4125



2001 Boeing BBJ

S/N 30791, Registration N4125



2001 Boeing BBJ

S/N 30791, Registration N4125



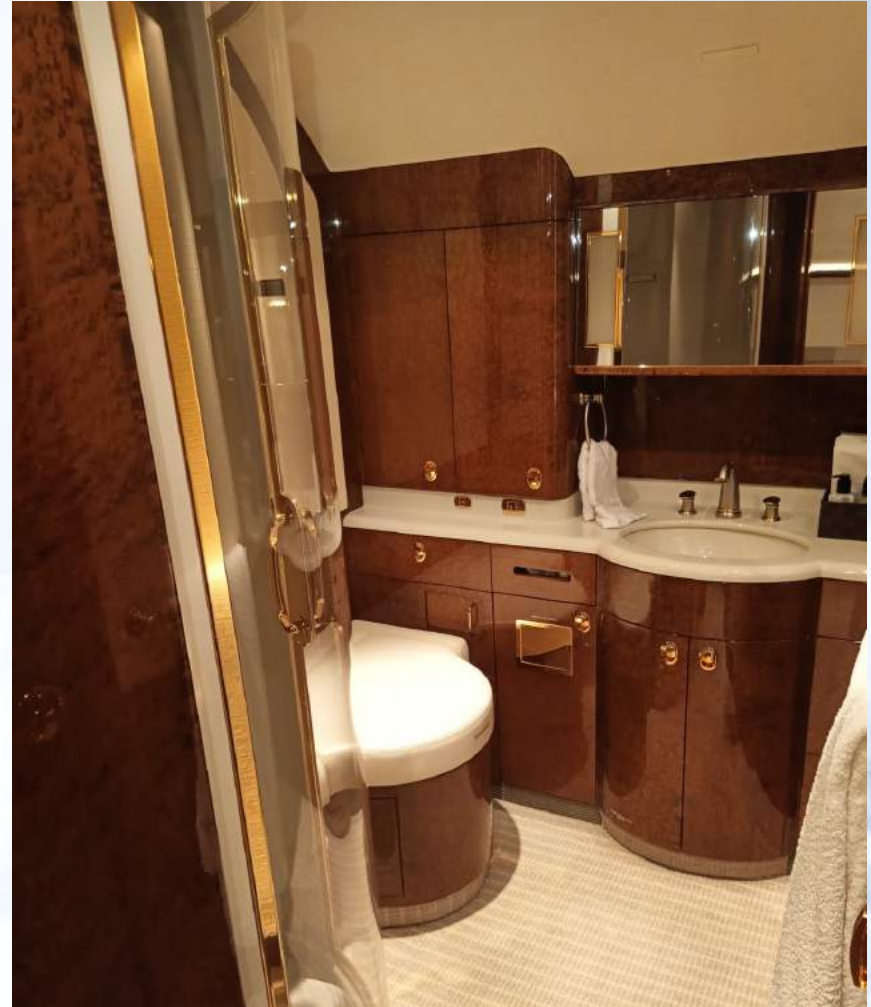
2001 Boeing BBJ

S/N 30791, Registration N4125



2001 Boeing BBJ

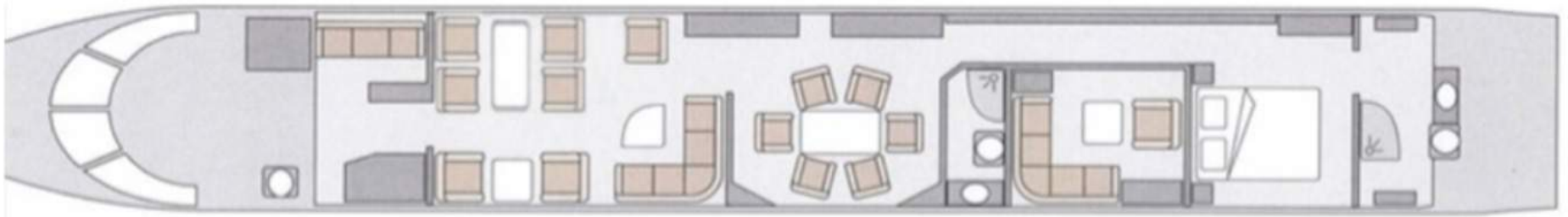
S/N 30791, Registration N4125



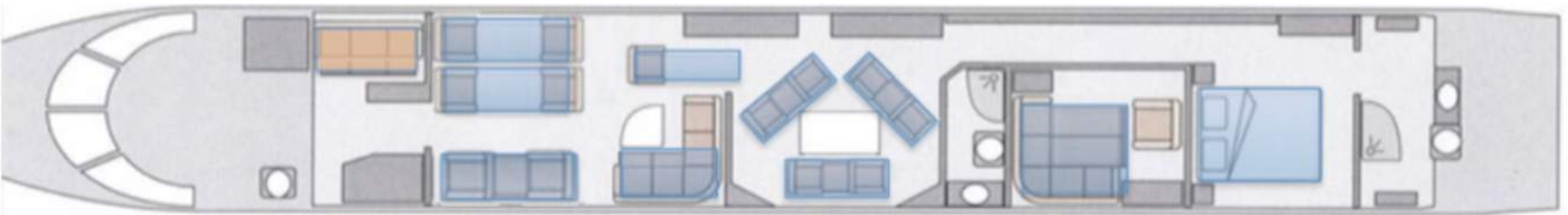
2001 Boeing BBJ

S/N 30791, Registration N4125

SEATED CONFIGURATION



SLEEPING CONFIGURATION





CORPORATE FLEET
SERVICES

North Carolina | Texas | Tennessee | Georgia | Nevada | Arizona | Missouri

www.cfsjets.com