



2022 Bombardier Global 7500

S/N 70104

2022 Bombardier Global 7500

S/N 70104, N520EM



AIRFRAME

Program: **Enrolled on Smart Parts Preferred**

Total Time: 749.8 Hours 254 Landings

ENGINES

Model: GE Passport

Engine Program: **Engines enrolled on GE OnPoint**

Engine 1: 749.8 Hours 261 Cycles

Engine 2: 749.8 Hours 261 Cycles



APU

Model: Safran

Program: **APU enrolled on Smart Parts Preferred**

APU: 1028 Hours 1016 cycles

HIGHLIGHTS

Under Warranty

No Known Damage History

Professionally flown and operated

2022 Bombardier Global 7500

S/N 70104, N520EM

AVIONICS

Rockwell Collins Pro Line Fusion Avionics Suite
Triple Honeywell IRS Units
Four Collins Type A & B Air Data Computers
Collins Triple FMS w/ VSpeed Database
Dual Collins GPS-4000S w/ SBAS Capability
Collins RTA-4218 Multiscan Weather Radar w/ Predictive Windshear
Collins TDR-94D Transponder
Third Integrated Flight Information System
Triple Collins VHF-4000 COMM w/ second datalink
Dual Collins RIU-4110 Radio Control Unit
Dual Collins NAV-4000 w/ ADF

Dual Collins DME-4000 Distance Measuring Equipment
Dual Collins ALT-4000 Radio Altimeters
Dual Collins HF-9031A HF Communication
Collins TSS-4100 TCAS II w/ change 7.1
Collins TPM-6000 TAWS
Collins Lightning Detection System
L3 FA5000 Flight Data Recorder
L3 SRVIVR Cockpit Voice Recorder w/ RIPS
Collins QAR-100 Quick Access Recorder
FANS 1/A & CPDLC
Heads-Up Display System w/ Synthetic Vision System

ADDITIONAL EQUIPMENT

Global Regulatory Package
Starlink Connectivity by SpaceX
Surface Management System w/ Airport Moving Map
Artex ELT-4000
EVS Enhanced Vision System
L3 GH-3900.2 Standby Instrument System
EVAS Emergency Vision Assurance System
ADS-B In
Predictive Windshear
2nd Dual Frequency Converter

Second Datalink System
KA Band SATCOM System
Aspire 100 Dual Channel Iridium Phone System
Two 24" HD Cabin Monitors (Zone 1 and 3)
One 32" HD Monitor (Zone 4)
2 Additional HD Cameras
Enhanced Soundproofing
Floor Mat Heaters (Entrance Area, Forward Lav)

2022 Bombardier Global 7500

S/N 70104, N520EM



INTERIOR

Excellent Condition

Executive twelve (12) passenger four zone interior with one crew observer seat, one crew rest area, a forward galley, a forward crew lavatory, an aft full lavatory, full height wardrobe, and large baggage area with external loading door.

Interior Four Zone features:

- (Zone 1) forward four-place club with upgraded 23" wide seats with one 24" HD monitor;
- (Zone 2) four-place conference center opposite chaise lounge arrangement;
- (Zone 3) includes a two-place club seating opposite full-berthing divan (three seats, two certified) with one 24" monitor;
- (Zone 4) stateroom suite with a 32" Monitor and bed opposite a credenza cabinet.



EXTERIOR

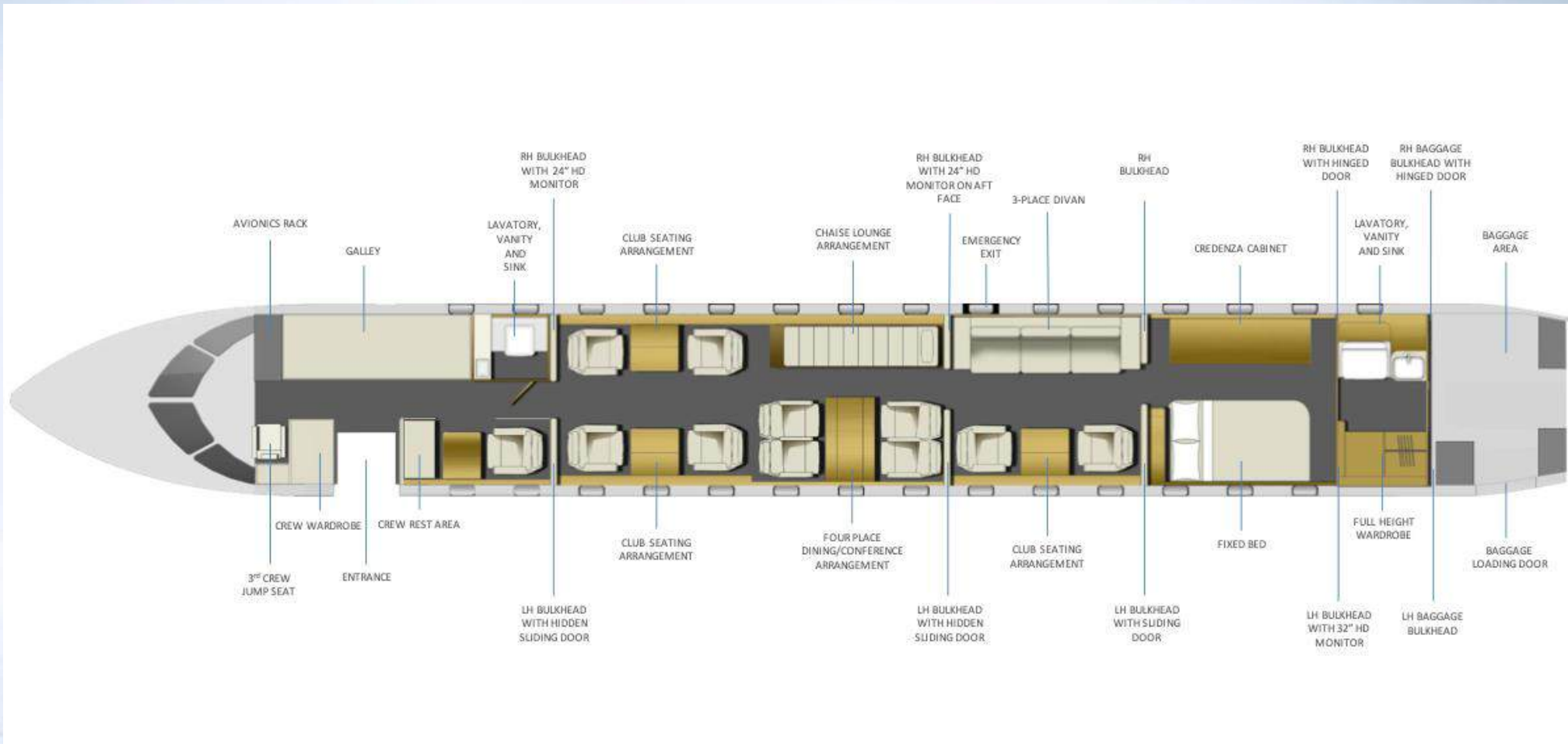
Excellent Condition

Dynamic Bombardier Paint featuring overall Gloss White with accent stripes in Gloss Silver Metallic, Gray, and Gloss Black Metallic.

[Click here for virtual tour.](#)

Interior Configuration

S/N 70104, N520EM



2022 Bombardier Global 7500

S/N 70104, N520EM



2022 Bombardier Global 7500

S/N 70104, N520EM



2022 Bombardier Global 7500

S/N 70104, N520EM



2022 Bombardier Global 7500

S/N 70104, N520EM



2022 Bombardier Global 7500

S/N 70104, N520EM



2022 Bombardier Global 7500

S/N 70104, N520EM



2022 Bombardier Global 7500

S/N 70104, N520EM



2022 Bombardier Global 7500

S/N 70104, N520EM



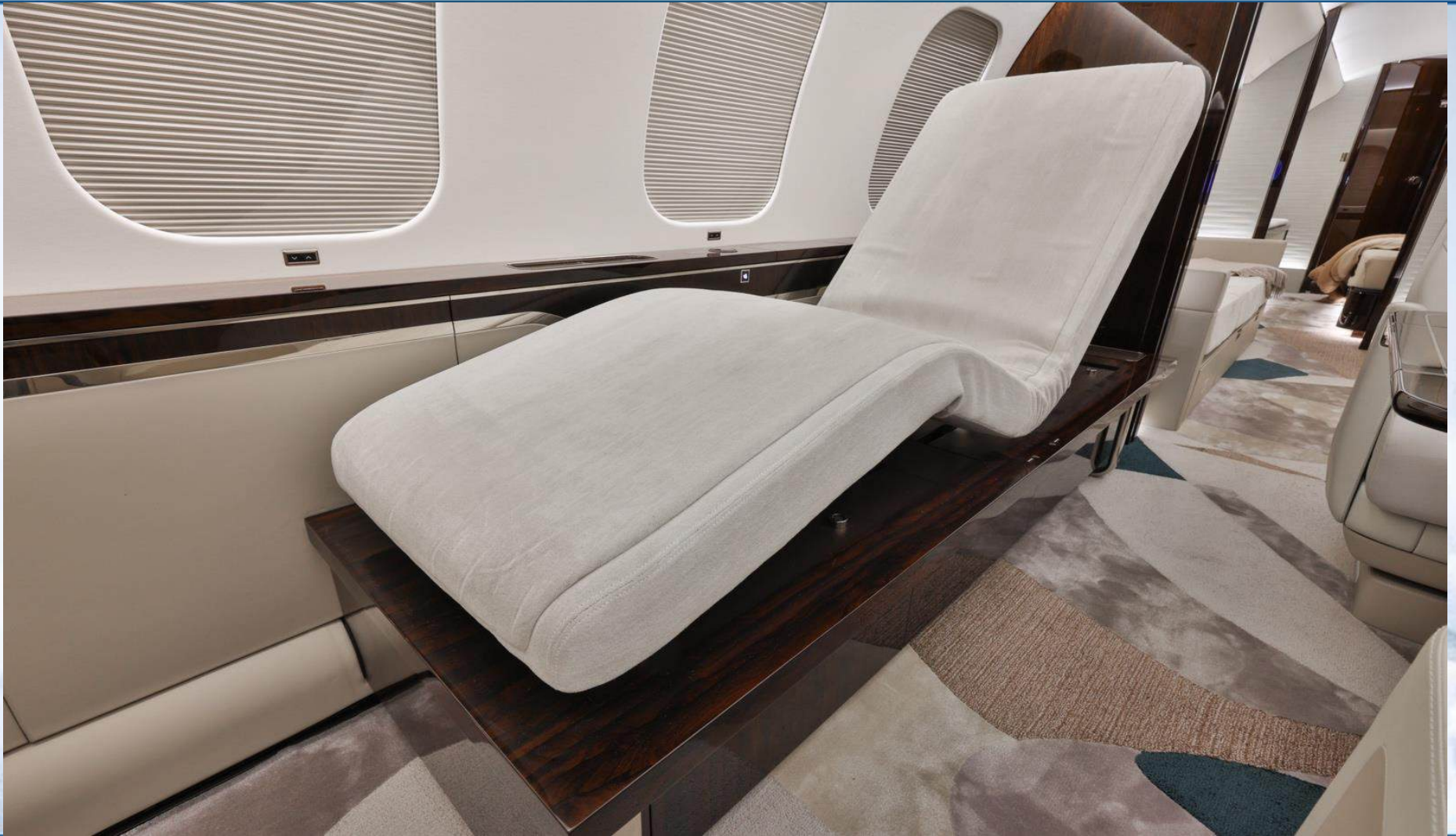
2022 Bombardier Global 7500

S/N 70104, N520EM



2022 Bombardier Global 7500

S/N 70104, N520EM



2022 Bombardier Global 7500

S/N 70104, N520EM



2022 Bombardier Global 7500

S/N 70104, N520EM



2022 Bombardier Global 7500

S/N 70104, N520EM



2022 Bombardier Global 7500

S/N 70104, N520EM



2022 Bombardier Global 7500

S/N 70104, N520EM



2022 Bombardier Global 7500

S/N 70104, N520EM





North Carolina | Texas | Tennessee | Georgia | Nevada | Arizona | Kansas

Contact: Randall Spencer | rs@cfsjets.com email | 704-363-8357